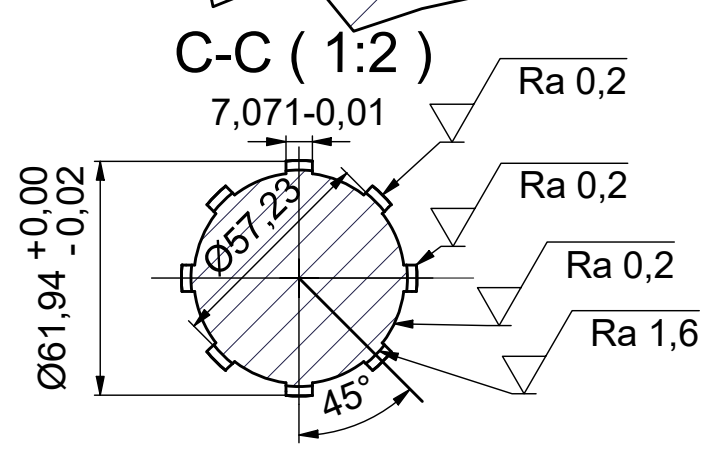
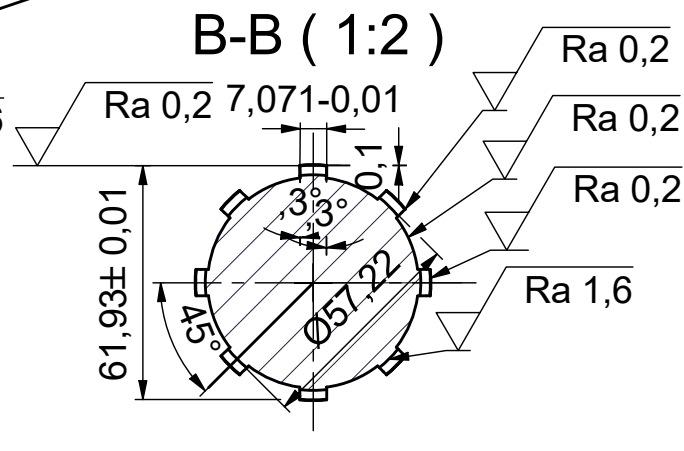
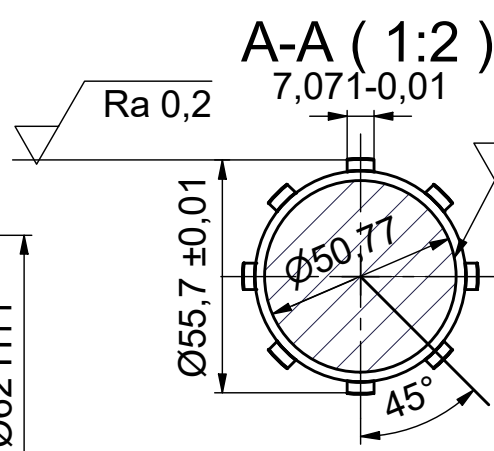
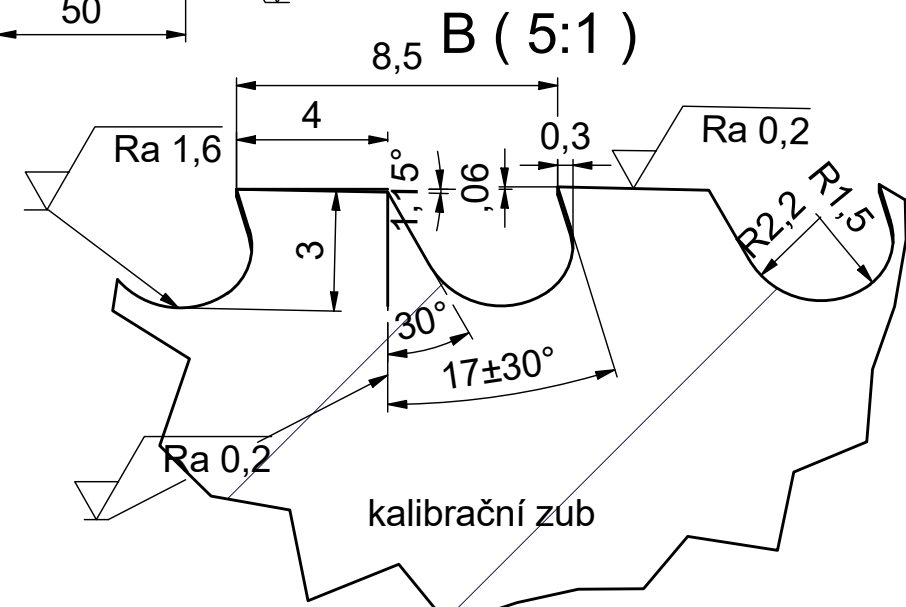
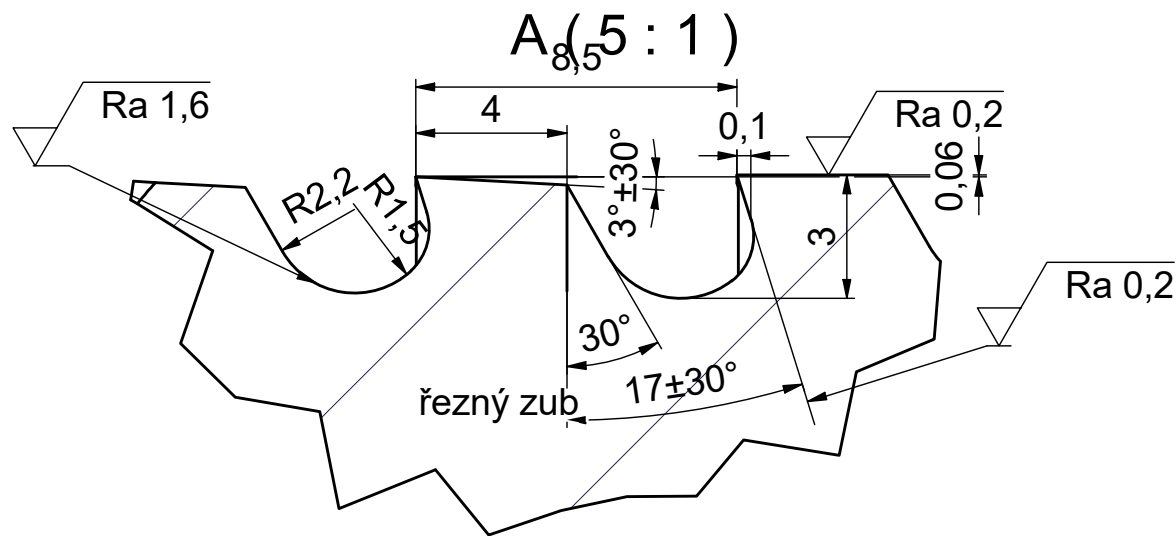
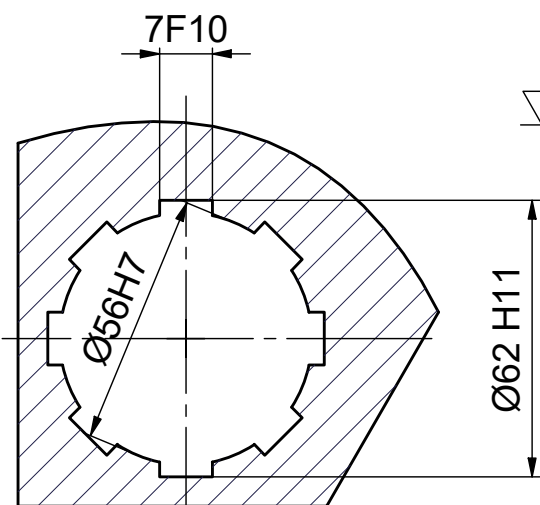
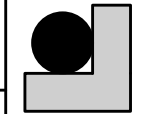


Tvar protahovaného otvoru



Tepelně zpracovat: břity HRC 61 až 63
upínací část HRC 35 až 41

VYPRAC. matousek jakub		DATUM: 26.10.17	
ZN.MAT: 19 802		T.O.: 153	
ROZMER POLOTOVARU: KR 60-750 ČSN EN 10025-1		POZN.	MĚR. 1:2
NÁZEV Protahovací trn		CAD/STT-01-01	
Listů 1		List 1	



SPŠ TECHNICKÁ
JABLONEC NAD NISOU